



CENTER, TEXAS  
LABOR MARKET INFORMATION

# Center, Texas Labor Market Information

## Introduction

Greetings and thank you for your interest in Center, Texas.

The following document seeks to present some foundational information on the Center and Shelby County workforce and labor market. The information is organized into sections consisting of basic demographics, wage data, commuting data, skills and training information, and growing occupations.

The Center Economic Development Corporation recognizes that a community's workforce can either be a key asset or a liability. As such, it is imperative that this data be collected and updated on a regular basis.

To achieve simplicity, the data is presented with very little analysis or explanation. This data was pulled from government data websites such as the US Census Bureau, the Bureau of Labor Statistics, and the Texas Workforce Commission. Source citations is listed near the data.

Any questions about this report can be directed to James Gibson, Economic Development Coordinator at [edc@ci.center.tx.us](mailto:edc@ci.center.tx.us) or by phone at 936/598-2941.

## BASIC DEMOGRAPHICS

	Center	Shelby County
Population - 2013 Estimate	5,277	25,865
Persons under 18 - %	27.9	26.6
Persons 65 and over - %	15.2	15.9
<b>Sex</b>		
Male	47.9	49.6
Female	52.1	50.4
<b>Race</b>		
White	45.8	79.6
African American	33.1	17.6
Hispanic	26.1	17.6
Foreign Born Persons - %	18.7	9.8
Veterans	415	1,826
Mean travel time to work - minutes	15	23.1
Homeownership rate - %	55.1	71.7
<b>Occupation</b>		
Management, business, science & arts	413	2,534
Service	453	1,736
Sales and office	346	2,065
Natural resources, construction & maintenance	181	2,086
Production and transportation	623	2,245
<b>Class of Worker</b>		
Private	1,563	7,976
Government	367	1,585
Self-Employed	86	1,084
Unpaid Family	0	21

Source: US Census Bureau. [www.census.gov](http://www.census.gov)



## LABOR FORCE SIZE

Shelby County		Labor Force
September	2014	12,662
October	2014	12,497
November	2014	12,578
December	2014	12,298
January	2015	11,461
February	2015	11,526

Five Counties Surrounding Shelby		Labor Force
September	2014	81,131
October	2014	80,313
November	2014	80,250
December	2014	79,706
January	2015	72,105
February	2015	72,161

Source: Texas Workforce Commission. [www.tracer2.com](http://www.tracer2.com)

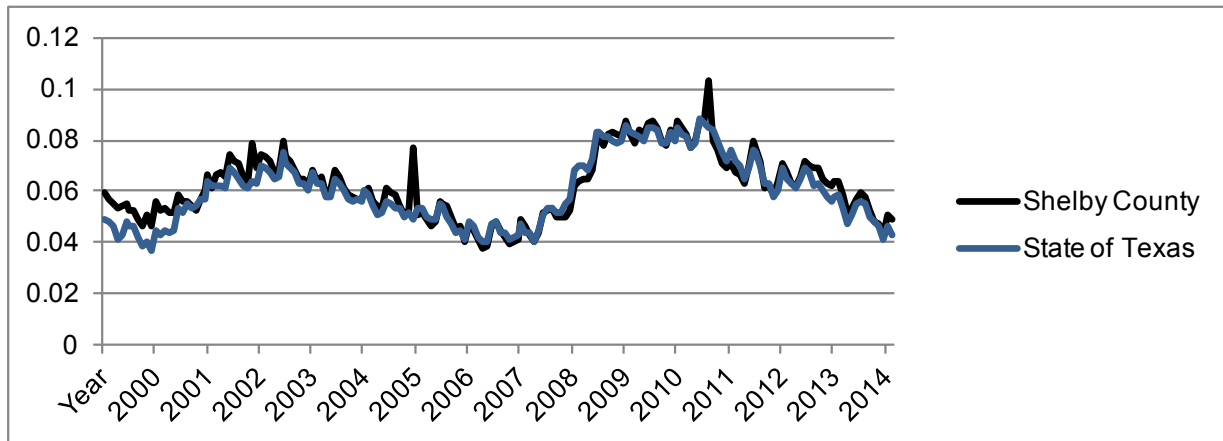
Decreases in labor force size can be attributed to energy industry layoffs due to low oil and natural gas prices.

## AREA UNEMPLOYMENT

### Unemployment Rates

		<u>Shelby</u>	<u>State</u>
2014	September	5.2%	5.0%
2014	October	4.8%	4.8%
2014	November	4.7%	4.6%
2014	December	4.3%	4.1%
2015	January	5.0%	4.6%
2015	February	4.9%	4.3%

Unemployment rates in Shelby County closely mirror that of the State of Texas. The Shelby County rate does not remain significantly above the State.



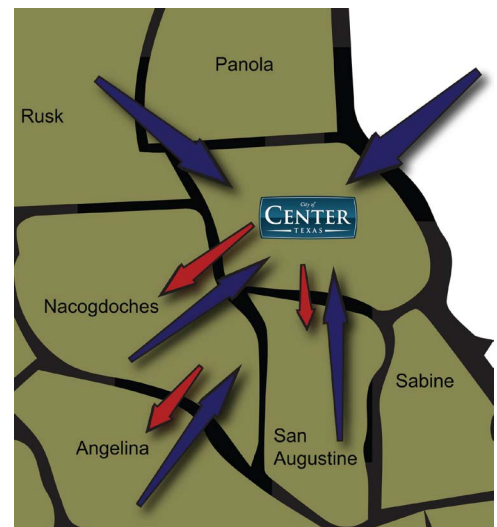
Source: Texas Workforce Commission. [www.tracer2.com](http://www.tracer2.com)

## LABOR SHED ANALYSIS

The table to the right ranks the locations where workers commuted from.

Center	760
Nacogdoches	169
Houston	136
Mansfield, LA	113
Dallas	85
Lufkin	73
San Augustine	65
Fort Worth	41
Timpson	40

The table below shows that the Center labor market is a net importer of workers.



Number of residents:	2006	2007	2008	2009	2010	2011
Living in Center	2,085	1,955	2,014	3,792	2,035	1,730
Living and working in Center	1,389	1,127	1,108	1,962	1,022	818
Living in Center and working outside of the city	696	828	906	1,830	1,013	912

Number of workers:	2006	2007	2008	2009	2010	2011
Working in Center	5,504	5,392	5,682	5,102	5,520	5,530
Working and living in Center	1,389	1,127	1,108	1,961	1,022	818
Working in Center, but living outside of the city	4,115	4,265	4,574	3,141	4,498	4,712

Net inflow or (-outflow) of workers	2006	2007	2008	2009	2010	2011
	3,419	3,437	3,668	1,311	3,485	3,800

Source: US Census Bureau On The Map [www.census.gov](http://www.census.gov)

**SHELBY COUNTY INDUSTRY MIX - COUNTY BUSINESS PATTERNS**  
**Number of business by industry and size**

Industry	Business Size by Number of Employees								
	1-4	5-9	10-19	20-49	50-99	100-249	250-499	500-999	1000 +
Agriculture	22	5	1	3	1	0	0	0	0
Mining, Oil & Gas Extraction	11	2	2	4	2	0	0	0	0
Utilities	7	0	0	0	0	0	0	0	0
Construction	24	5	5	7	1	1	0	0	0
Manufacturing	8	2	2	4	4	2	0	0	1
Wholesale Trade	7	4	4	2	0	0	0	0	0
Retail Trade	39	30	15	9	1	0	1	0	0
Transportation & Warehousing	20	7	4	3	0	0	0	0	0
Information	8	1	2	0	0	0	0	0	0
Finance & Insurance	25	12	1	0	2	1	0	0	0
Real Estate	15	3	3	0	0	0	0	0	0
Professional Services	24	5	2	2	0	0	0	0	0
Administrative Support & Waste Mngmt.	12	2	1	1	1	0	0	0	0
Health Care & Social Assistance	13	10	12	1	4	2	0	0	0
Arts, Entertainment & Recreation	3	1	0	0	0	0	0	0	0
Accommodations & Food Service	12	7	7	8	1	0	0	0	0
Other Services	42	12	5	0	1	0	0	0	0
Not Classified	1	0	0	0	0	0	0	0	0
<b>Total - All Sectors</b>	<b>293</b>	<b>108</b>	<b>66</b>	<b>44</b>	<b>18</b>	<b>6</b>	<b>1</b>	<b>0</b>	<b>1</b>

2012 County Business Patterns  
Shelby County  
Source: <http://censtats.census.gov/cgi-bin/cbpnaic/cbpsect.pl>

	Paid Employees	Annual Payroll (\$1,000)	Total Establishments
Agriculture	227	6,750	32
Mining, Oil & Gas Extraction	310	15,029	21
Utilities	n/a	439	7
Construction	552	28,376	43
Manufacturing	2,289	71,347	23
Wholesale Trade	138	6,764	17
Retail Trade	1,096	24,861	95
Transportation & Warehousing	240	9,647	34
Information	n/a	1,412	11
Finance & Insurance	392	15,949	41
Real Estate	82	2,119	21
Professional Services	145	5,765	33
Administrative Support & Waste Mngmt.	n/a	n/a	17
Health Care & Social Assistance	804	20,508	42
Arts, Entertainment & Recreation	12	275	4
Accommodations & Food Service	427	5,856	35
Other Services	260	5,501	60
<b>Total</b>	<b>7,192</b>	<b>224,066</b>	<b>537</b>

2012 County Business Patterns  
Shelby County  
Source: <http://censtats.census.gov/cgi-bin/cbpnaic/cbpsect.pl>

# WORKFORCE TRAINING AND SKILLS

## Regional Training Programs, Participation and Graduates

The graphic at right identifies regional institutions of higher education or technical training.

Center is home to Panola College's Shelby Regional Training Center, which houses the welding and petroleum technology programs.



The table below lists a sample of the participation and skilled graduates entering the workforce.

The information on the following page describes the skill level of the regional workforce.

		2011 Total Enrollment	2011 Graduates	2012 Total Enrollment	2012 Graduates	2013 Total Enrollment	2013 Graduates
<b>PROFESSIONAL PROGRAMS</b>							
Physics, General							
	Stephen F. Austin University	95	0	95	11	88	13
Mechanical Engineering							
	University of Texas - Tyler	189	26	190	18	256	24
	LeTourneau University	N/A	29	N/A	29	N/A	21
Mechanical Engineering Technology							
	LeTourneau University	N/A	15	N/A	12	N/A	9
Engineering/Industrial Management							
	University of Texas - Tyler	26	8	29	10	36	17
<b>TECHNICAL PROGRAMS</b>							
Industrial Technology/Technician							
	University of Texas - Tyler	61	40	69	25	86	22
	Texas State Technical College	73		45		43	
	Panola College	151	25	189	58	245	110
Manufacturing Technology/Technician							
	Kilgore College	37	19	44	9	37	28
Electrical Engineering Technician							
	Angelina College	16	5	18	N/A	15	N/A
Electromechanical Engineering Technician							
	Angelina College	75	35	91	32	95	27
Machine Tool Technology/Technician							
	Angelina College	25	N/A	19	9	25	N/A
	Texas State Technical College	14	N/A	22	N/A	29	N/A
Instrumentation Technology/Technician							
	Texas State Technical College	84	30	88	26	83	35
Welding Technology/Welder							
	Kilgore College	76	9	114	14	110	32
	Angelina College	104	40	94	32	107	26
	Texas State Technical College	44	18	43	15	59	12
	Panola College	33	22	54	19	51	36

## Location Quotients (LQ)

A location quotient is the numeric representation of the relative strength of a workforce compared to another entity. A LQ of 1 or greater reflects a strength.

2013 Shelby County Location Quotients Compared to State of Texas

Agriculture	9.69
Manufacturing	3.22
Mining, Oil & Gas Extraction	1.91
Retail Trade	1.09
Construction	1.04
Transportation & Warehousing	0.94
Finance & Insurance	0.81

Source: Bureau of Labor Statistics  
www.bls.gov

2013 Top Manufacturing Location Quotients Counties Compared to State of Texas

Morris	5.94
Titus	4.61
Grimes	3.98
Calhoun	3.70
Hunt	3.49
Waller	3.31
<b>Shelby</b>	<b>3.22</b>
Wilbarger	3.13
Runnels	3.07
Ellis	2.81



## Educational Attainment

Shelby County students are serviced by five public school systems: Center ISD, Timpson ISD, Tenaha ISD, Joaquin ISD, and K-8 grade at Excelsior ISD.



	Center	Shelby County	Nacogdoches	Panola	Rusk	San Augustine	Sabine	Regional Total + Shelby County
Population 25 & Over	3,429	16,451	36,617	15,939	36,381	6,357	7,828	119,573
Less than 9th Grade	505	1,442	2,986	968	3,139	759	428	9,713
9th to 12th Grade no diploma	767	2,258	4,157	1,666	4,222	700	1,117	14,120
High School Graduate (Equivalent)	1,021	6,208	10,535	5,834	12,214	2,430	3,134	40,355
Some College, no degree	700	3,706	8,307	4,341	9,597	1,234	1,859	29,044
Associates Degree	44	575	1,746	1,248	2,177	457	238	6,441
Bachelor's Degree	222	1,531	5,510	1,420	3,680	544	668	13,353
Graduate or Professional Degree	170	731	3,376	462	1,352	242	384	6,547

Source: American Fact Finder US Census Bureau  
www.census.gov

## OCCUPATIONS AND WAGES

### Deep East Texas Region

#### Total Employment and Average Wages by Occupation Category

Occupation Category	Total Employment	Average Wage
Management	13,190	82,458
Business & Financial Operations	3,280	56,922
Computer & Mathematical	1,290	66,672
Architectural & Engineering	1,390	62,780
Life, Physical, & Social Sciences	600	52,624
Community & Social Services	2,120	43,465
Legal	580	49,150
Education	9,440	39,717
Arts, Design & Media	1,030	36,630
Healthcare	6,530	83,312
Healthcare Support	4,330	29,799
Protective Services	4,270	40,590
Food Preparation	9,590	19,529
Building & Grounds Maintenance	3,580	25,954
Personal Care	5,840	22,079
Sales	12,160	42,796
Office & Administrative Support	16,800	29,879
Farming	6,540	44,645
Construction & Extraction	5,370	31,227
Installation & Repair	4,520	41,365
Production	9,830	29,485
Transportation	7,710	31,114

Source: Texas Wages - Texas Workforce Commission  
<http://www.texaswages.com>

### Average Weekly Wage - County Comparisons

#### Manufacturing Sector

	Shelby	Dallas	Bexar	Harris	Bowie	Potter
2014	650	1,406	1,024	1,547	786	767
2013	624	1,382	984	1,531	754	805
2012	661	1,360	959	1,554	727	787
2011	579	1,330	903	1,492	702	767

#### Transportation Sector

	Shelby	Dallas	Bexar	Harris	Bowie	Potter
2014	787	1,003	967	1,453	822	927
2013	738	1,006	980	1,424	824	891
2012	762	995	957	1,508	864	917
2011	798	976	922	1,335	856	921

Source: Texas Workforce Commission  
 Quarterly Employment and Wages  
<http://www.tracer2.com>



Deep East Texas Region  
Top 20 Paying Occupations and Regional Comparison

Occupation	2012 Employ.	Deep East Texas	Statewide	Central Texas	Coastal Bend	Heart of Texas	Northeast Texas	Panhandle
Physicians & Surgeons	170	257,439	187,541	159,783	239,661	238,900	229,014	210,841
Nurse Anesthetists	30	235,422	162,093	174,653	121,686	149,951	144,501	187,525
Dentists	70	213,792	186,517	156,411	171,033	204,950	200,794	
Family & General Practitioners	70	192,069	187,525	191,415	133,813	180,747	227,942	178,268
Obstetricians & Gynecologists	30	182,431	215,224	160,042		106,950		
Credit Analysts	40	148,334	70,753	53,536	73,832	60,332	57,992	61,332
Marketing Manager	50	143,609	134,414	122,526	114,523	121,012	99,649	116,882
Architectural & Engineering Mgrs	70	132,160	160,339	132,865	131,428	142,094	115,442	156,822
Pharmacists	210	129,783	116,784	107,205	123,860	124,151	119,926	115,624
Physical Therapists	140	124,717	90,897	75,550	100,354	82,260	83,319	88,582
Chief Executives	120	114,310	185,089	131,715	138,406	123,060	113,732	110,970
Physician Assistants	50	114,254	102,261	101,920	115,535	117,820	132,149	95,721
Human Resources Mgrs	40	113,487	116,639	104,148	97,340	98,909	86,643	92,669
Sales Managers	170	111,309	129,384	97,026	115,103	116,332	92,415	106,144
All Other Managers	170	110,668	117,849	88,710	103,129	115,452	107,061	103,196
Nurse Practitioners	70	105,853	101,490	95,397	92,837	108,329	122,290	93,750
Computer Information System Mgrs	80	98,018	135,136	107,248	106,124	107,502	91,704	92,486
General Managers	1,550	95,673	118,246	90,311	101,009	105,158	95,031	99,305
Natural Sciences Managers	10	92,664	125,747	114,501	88,269		104,840	
Occupational Therapists	90	91,647	86,552	82,435	95,032	78,007	80,512	90,030

Deep East Texas Region  
Analysis and Comparison of Skilled Worker Positions

Occupation	2012 Employ.	Deep East Texas	Statewide	Central Texas	Coastal Bend	Heart of Texas	Northeast Texas	Panhandle
Industrial Production Managers	150	81,962	108,079	86,201	98,779	80,328	90,520	101,069
Purchasing Managers	20	87,514	119,528	107,255	107,137	88,107	90,784	83,645
Human Resources Specialists	270	47,355	62,292	56,208	47,765	47,772	54,388	55,416
Office Clerks, General	2,820	25,902	30,198	26,755	26,925	26,530	28,531	28,203
Electricians	430	34,894	44,108	47,385	43,898	39,173	40,963	47,586
Maintenance & Repair Workers	1,130	28,253	33,527	29,837	29,688	28,021	29,009	32,040
Structrural Metal Fabricators	100	37,828	33,910	31,973	31,733	30,230	34,174	36,644
Cutting & Press Machine Operator	180	23,591	28,325	27,718	32,824	26,428	34,290	29,448
Machinists	330	35,173	40,009	35,508	45,089	35,143	39,931	36,682
Welders, Cutters, Solderers	480	39,465	39,593	35,211	41,609	35,260	35,766	41,924
Helpers - Production Workers	870	22,067	23,799	22,378	25,853	24,545	21,829	20,378
Industrial Truck Drivers	520	26,961	28,593	29,000	28,861	27,496	31,922	30,517
Grinding Machine Operators	60	29,439	31,311	20,543	25,700	25,759	37,125	27,477
Lathe Machine Operators	60	30,518	31,671				34,163	40,020

Source: Texas Wages - Texas Workforce Commission  
<http://www.texaswages.com>



FOR MORE INFORMATION CONTACT

JAMES P. GIBSON

617 TENAHA STREET  
CENTER, TX 75935

936/598-2941

[WWW.CENTERTEXAS.ORG](http://WWW.CENTERTEXAS.ORG)